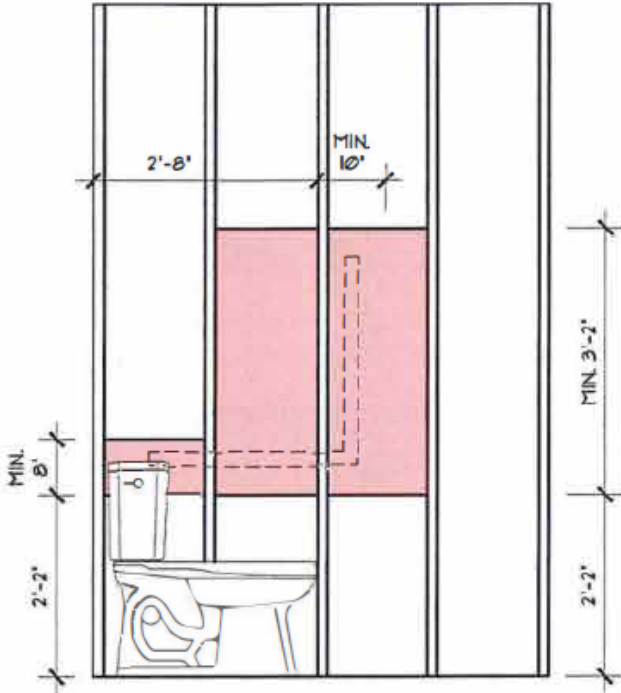


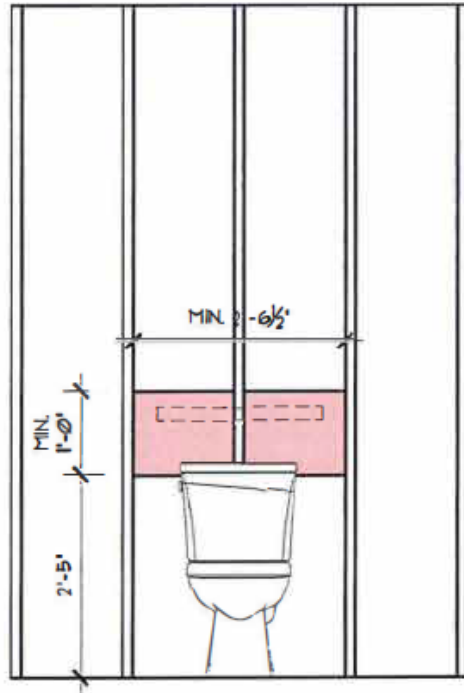


Building Department

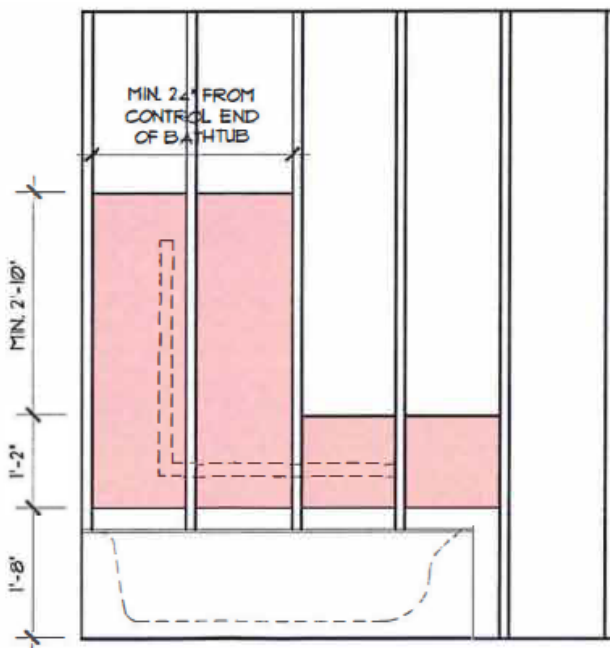
Stud Wall Reinforcement OBC 2012, DIV.B.9.5.2.3



- Future Grab Bar Shall Be:
- a) Vertical Component
 - 30" in length, and
 - mounted 6" from the end of the toilet bowl
 - b) Horizontal Component
 - 30" in length, and
 - mounted approximately 30" above the floor



- Future Grab Bar Shall Be:
- a) Minimum 24" in Length, and
 - b) Mounted
 - 33"-36" above the floor (tankless), or
 - 6" above the tank



- Future Grab Bar Shall Be:
- a) Vertical Component
 - 36" in length, and
 - Mounted 12"-18" from the control end of the bathtub
 - b) Horizontal Component
 - 36" in length, and
 - Mounted 6"-8" above the rim of the bathtub