

# Hydro One is investing in your community

Hydro One is working in your community to ensure a safe and continued supply of power to the community of Emsdale

In order to continue providing a safe and reliable supply of electricity to the homes and businesses in the community of Emsdale, Hydro One is required to replace infrastructure that has reached end-of-life and install new electrical structures and equipment within our property at Emsdale Distribution Station, located at 39 Deer Lake Road.

## What to expect during construction



### Timing

- Work at the station will begin in September, and will be completed in late spring/early summer 2022
- Our crews will be on site Monday to Friday, from 7 a.m. to 5 p.m.
- Some weekend work or after hour work may be required in emergency situations



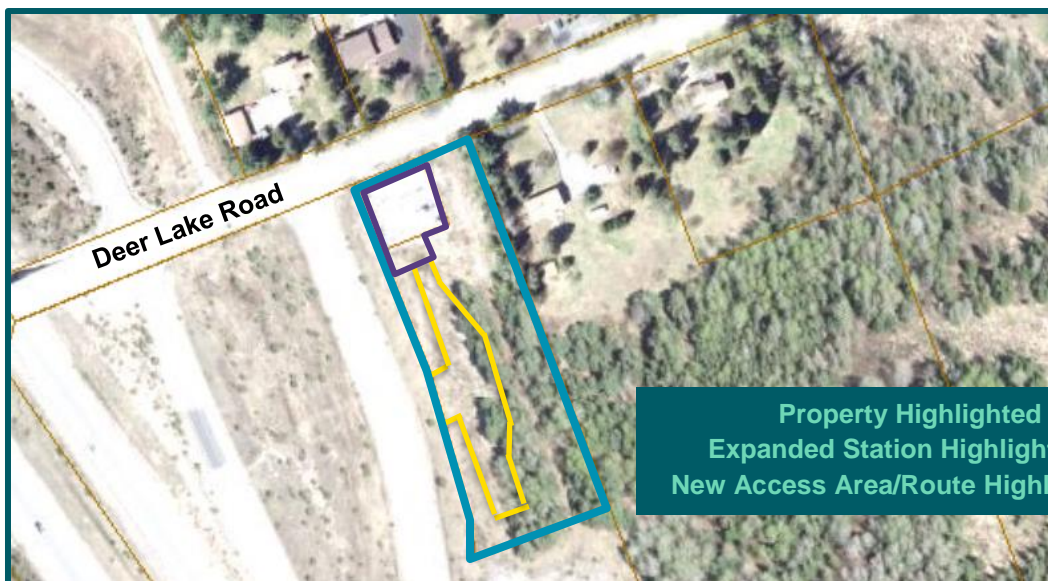
### Work Requirements

- Crews will replace equipment within the station property as it has reached end of life, install a permanent access area/route on station property and expand the station to the south, please see map below
- To ensure no outages, our crews will setup a temporary work station south of the station
- To provide safe access during construction and for the new access route, crews will use mechanical equipment to remove trees and other vegetation



### Temporary Impacts

- During the project heavy equipment will be traveling to and from the site at certain times
- When required, traffic control will be in place to ensure the safety of drivers and pedestrians
- During the duration of work, an increase in noise and dust may be experienced at times



## Learn more about the work

Thank you for your patience as we complete this important work. If you have any questions, please don't hesitate to contact us.